

**Door / Drawer Sizing:**

All Drawer Door Sizing based upon 'Overlays'.

Utilizing 30"H Box w/4.25"H Apron Opening.

Overlays typically 1/2" or Full Inset.

**Hinging:**

1/2" Overlay Concealed or Exposed Hinging

Full Inset Concealed Hinging

Finial Hinging

3/8" Inset Hinging

Typical exposed distance between Top Moulding and Top of Door

Top Moulding must overlap Face Frame for attachment

Hold-down from Ceiling to Case 1" typ.  
Top Rail Sizing determined by Moulding Height and Reveal desired minus 1" from Hold-down.  
Face Frame may be extended to Ceiling.

Door Bottom Overlay may be adjusted to control exposure of Bottom Rail

Bottom Rail of Upper 2"H to accommodate 1.25" void for Under-Cabinet Lighting

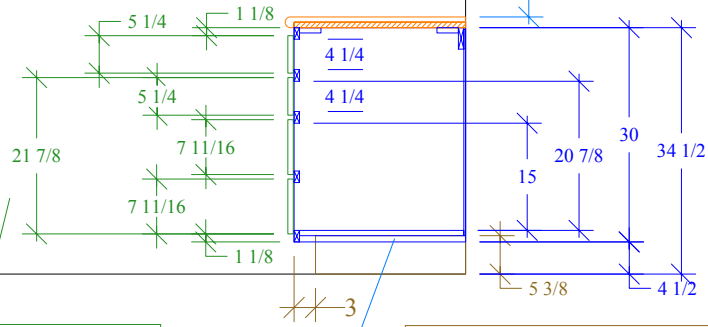
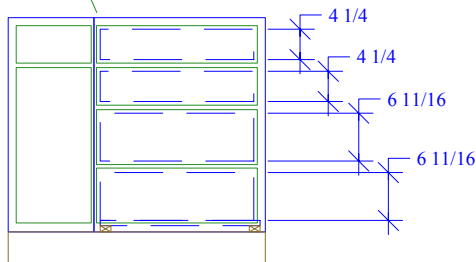
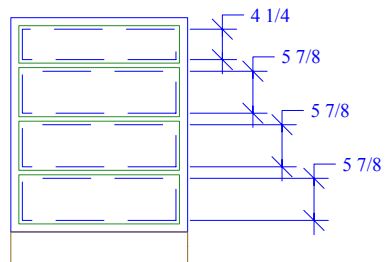
Finished Ends extended to Bottom of Bottom Rail

Stile Sizing .875" at Cabinet Joining w/.125" Scribing

(3) Equal Drawers under the Apron

Full-Inset Exception:  
Bottom Rail decreases to 1.75" while Bottom Scribe remains at 1.25" to accommodate Light Recess and form Door Stop

Typical Clearance between the Counter and Upper Cabinetry



Kicks joined when possible and extended where applicable

Balanced Options based upon 4.25" Apron Opening

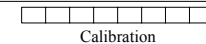
Adjustments for Flooring may be included in Kick Sizing

Beading of Inset Face Frame and Sizing of same to be incorporated in the existing Dimensioning of Stile and Rail Sizing. The Beading does not add to these Dimensions.

Full-Inset Exception:  
Bottom Scribe increases to 1.125" and Toe Kick Height increases to 5.625" to form Door Stop

Name: Classic Bath Designs, Inc.

Scale:

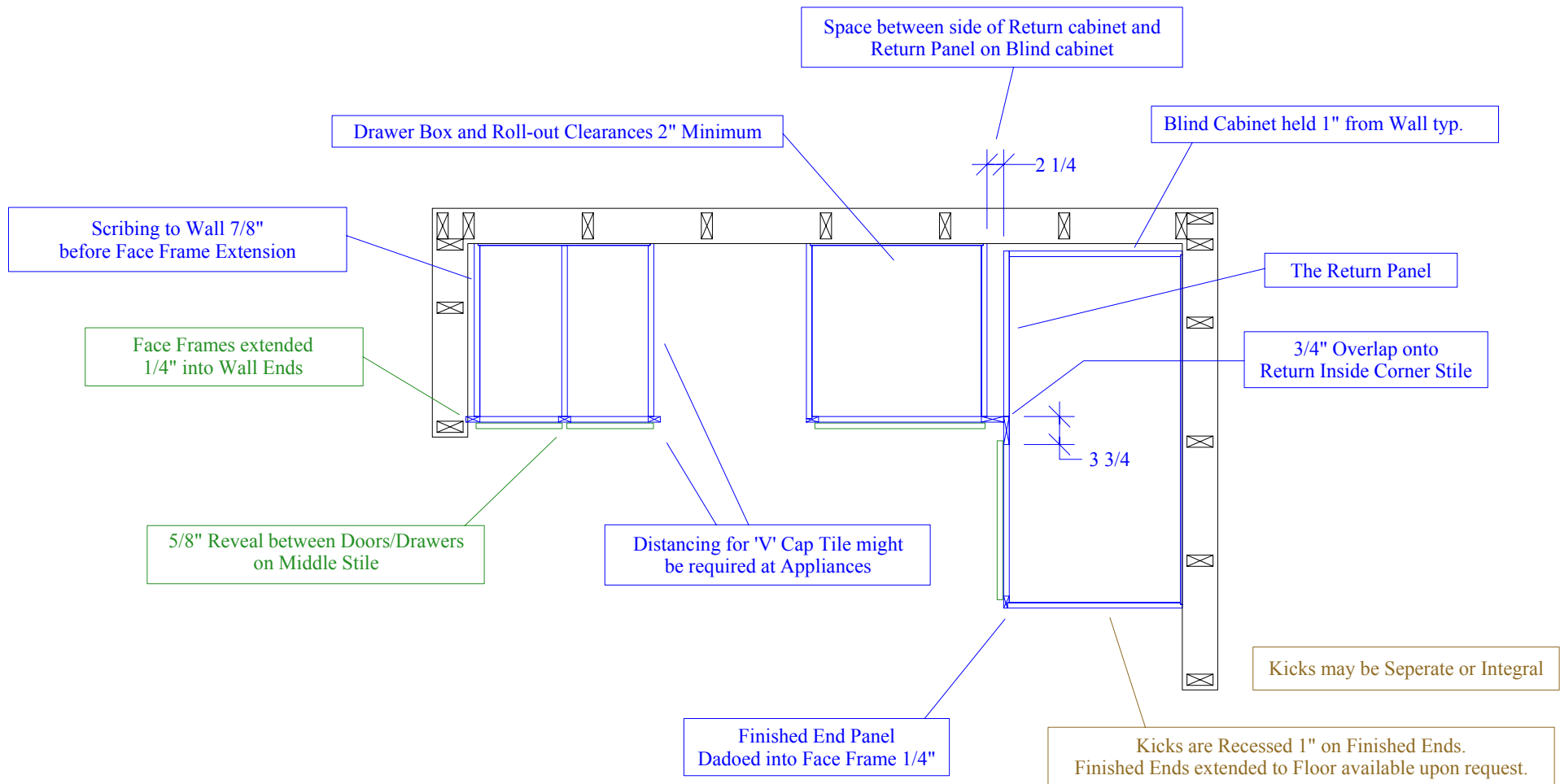


1"

Dr. by: Bri

Project: Cabinetry Construction - Face Frame and Full Inset

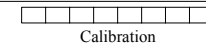
Date: 1/2/'06



## Base and Full Height Cabinet Construction

Name: Classic Bath Designs, Inc.

Scale:

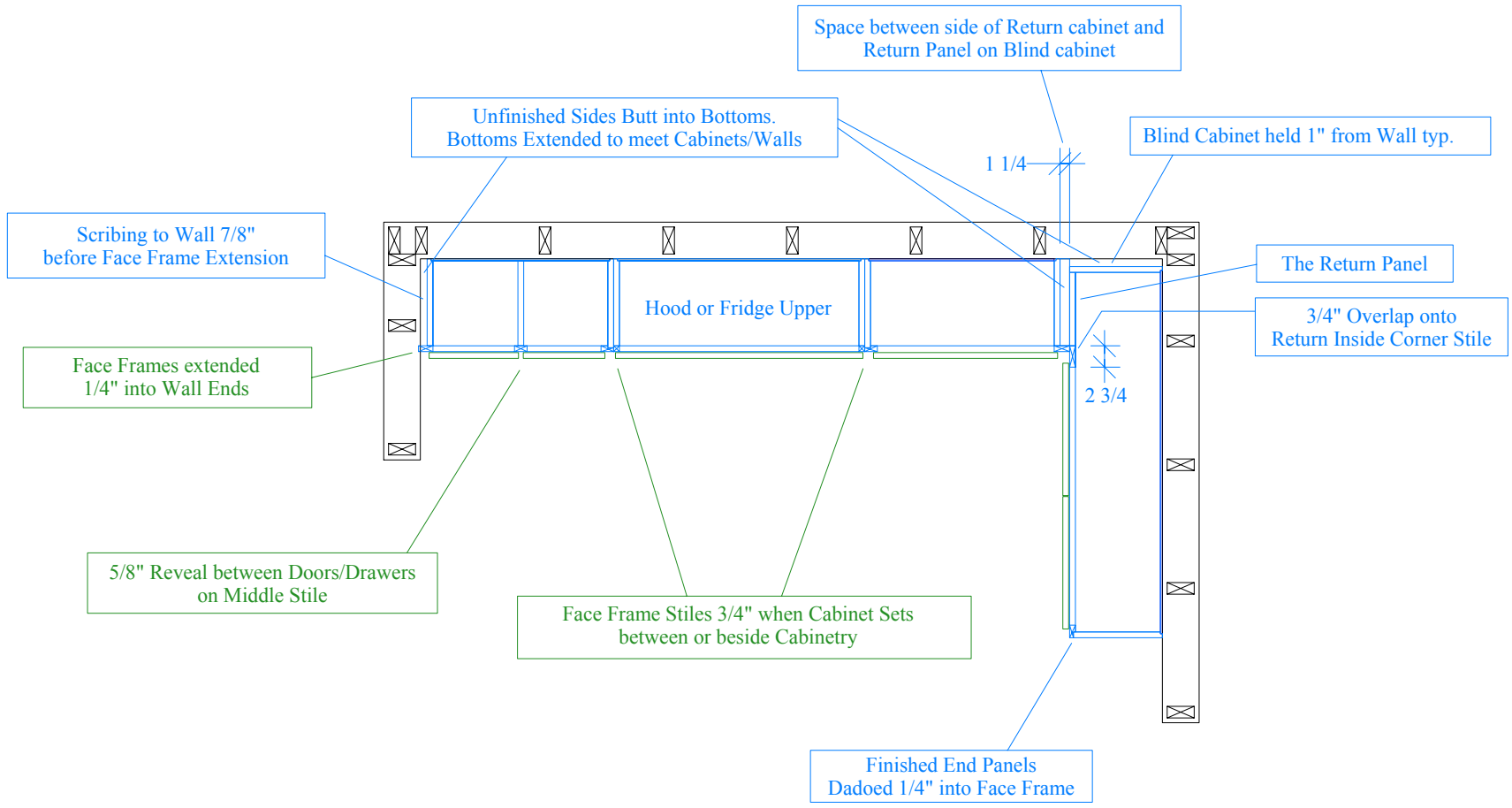


1"

Dr. by: Bri

Project: Cabinetry Construction - Face Frame and Full Inset

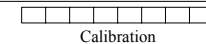
Date: 1/2/'06



## Upper Cabinet Construction

Name: Classic Bath Designs, Inc.

Scale:



1"

Dr. by: Bri

Project: Cabinetry Construction - Face Frame and Full Inset

Date: 1/2/'06