

This Data Sheet Includes Information On

**Miele**

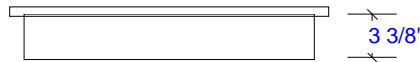
• Product Model Number (s):  
Cooktop:  
KM342G and KM342LP

• Dimensions (Actual Size)

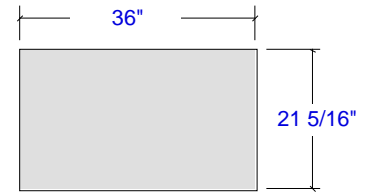
- Overall width: 36"
- Overall depth: 21 5/16"
- Distance from countertop to bottom of unit: 3 3/8"
- Cut-Out width: 35"
- Cut-Out depth: 20 3/8"
- Minimum spacing to nearest vertical combustible wall to the RIGHT: 12"
- Minimum spacing to nearest vertical combustible wall to the LEFT: 12"
- Minimum spacing to nearest vertical combustible wall to the REAR: 2 3/4"
- Minimum spacing to front edge of counter: 1 7/8"
- Minimum distance between cooktop and cabinet directly above: 30"
- Minimum width of cabinet directly above: 36"
- Maximum depth of cabinets directly above and adjacent: 13"
- Minimum distance between countertop and adjacent cabinet above: 18"

• Additional Information

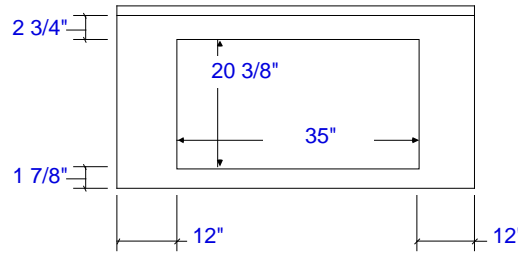
- Cutout requires 3/16" radius in each corner.
- Minimum countertop depth is 25".
- Electrical requirements : 6 foot, 110Volt 15amp 3-wire power supply connects at rear center bottom of unit.
- Gas requirements: Connects at rear center bottom. You must use a regulator.



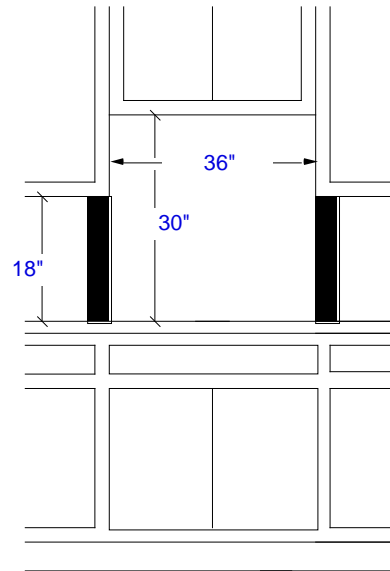
Side View (not to scale)



Overall Dimensions  
Top View (not to scale)



Cut-Out Dimensions  
Countertop View  
(not to scale)



Cabinet Requirements  
Wall View  
(not to scale)

Requires 18" high by 4" wide clearance to any combustible surface above the cooktop on both sides. (noted by solid area)

Subject to change without notice. This system is designed to be updated daily if necessary. Dimension Express is not responsible for use of superseded, voided, or outdated data sheets. Because of the difficulty or impracticability of determining actual damages, liability of Dimension Express shall not exceed \$50.00.

Copyright © Dimension Express, 2002.

• NEVER reuse Data Sheets. Data Sheets are subject to change without notice. Dimension Express is a FREE service bureau and is updated daily, it makes far more sense to spend the time necessary to request new Data Sheets for each project, as opposed to the problems, time, costs, and risks associated with reusing old Data Sheets.

- Call Dimension Express if you have any questions at (775) 833-3633 •
- Always refer to a current Code at a Glance or manufacturer directory •
- Data Sheet codes change on the first of odd numbered months at 12:01am •