

ContourLine
60cm Microwave Oven

M 6160 TC



ContourLine 60cm Microwave Oven M 6160 TC



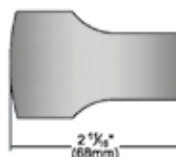
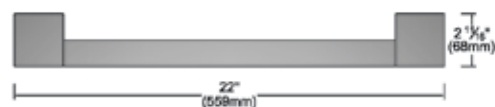
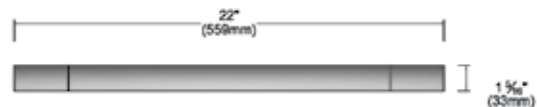
M 6160 TC

Features:

- DirectSelect controls offer turn dial operation with a 7-segment liquid crystal display
- Popcorn button
- 900 watt microwave
- XL cavity — 1.62 cu ft (46 l) with a 15.8" turntable diameter to reheat several plates at one time
- 16 automatic programs
 - 9 for defrosting
 - 3 for cooking frozen food
 - 4 for fresh ingredients
- Minute plus button
- Timer
- LED lighting for the perfect illumination and low maintenance
- Horizontal alignment with other 60cm appliances
- Comfort handle

Comfort Handle: Standard with ContourLine

(DS 6708 Item #09828380)



ComfortSwivel Handle: Optional for ContourLine Optional for PureLine

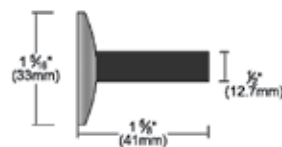
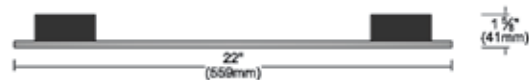
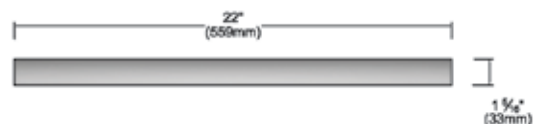
(DS 6718 Item # 09828390)

Silhouette Handle:

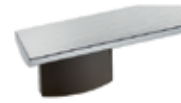
Standard with Pureline

Optional for Contourline

(DS 6808 Item # 09828400)



Silhouette Handle (Chrome):
Standard with BrilliantWhite
(DS 6808 Item # 09828410)



Silhouette Handle:
Standard with Truffle Brown
(DS 6808 Item # 09870690)

ContourLine 60cm Microwave Oven

M 6160 TC



SPECIFICATIONS	
M 6160 TC — Item 24616050USA	
Overall Unit Width - Excluding Fascia Dimension	21" (533mm)
Overall Height - Excluding Fascia Dimension	16 ¹ / ₄ " (413mm)
Overall Depth - Excluding Fascia Dimension	15 ¹ / ₄ " (387mm)
Oven Door Clearance	15 ¹ / ₂ " (394mm)
Overall Oven Interior Capacity	Suitable for plates with a diameter up to 12 ¹ / ₂ "
Overall Fascia Dimensions	23 ¹ / ₁₆ " (586mm) W x 17 ¹³ / ₁₆ " (452mm) H x 7 ⁷ / ₈ " (22mm) D
Oven Interior Dimensions	13 ¹ / ₄ " (337mm) W x 8" (203mm) H x 14" (356mm) D
Built-In	
Minimum Cabinet Width	22 ¹ / ₁₆ " (560mm)
Minimum Cabinet Depth	19 ¹¹ / ₁₆ " (500mm)
Minimum Height	17 ¹¹ / ₁₆ " + 1 ¹ / ₈ " Overhang clearance A minimum installation height of 33 ⁷ / ₁₆ " (850mm) from floor must be maintained.
Minimum Base Support	40 lbs
Additional Cut-outs Required	No
Electrical	
Electrical Requirements	120V 15A 60Hz
Power Cord	Yes - Molded NEMA 5-15 plug, 5 ft. cord
Cut Out for Power Cord	Minimum 3" square
Electrical Rating	120V 13.5A 60Hz
Total Amps	11.4A
Shipping	
Shipping Weight	49 lbs
Shipping Dimensions	25 ⁷ / ₈ " W x 19 ¹³ / ₁₆ " H x 21 ¹ / ₈ " L
Support	
Call	800.843.7231
20/20	©2020technologies.com

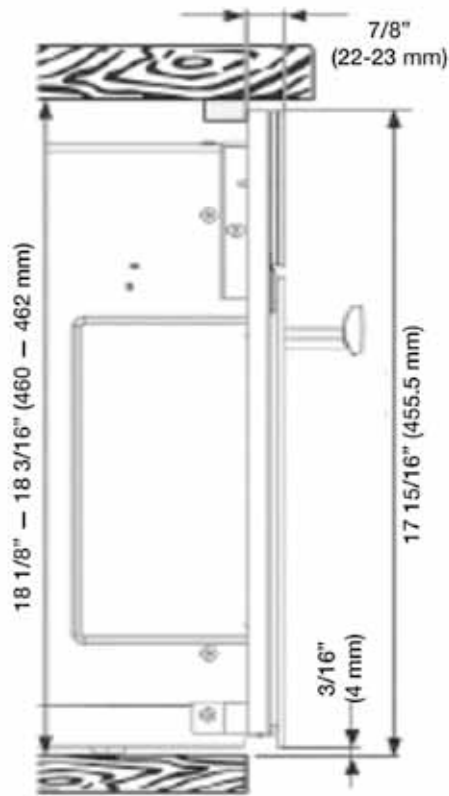
ContourLine 60cm Microwave Oven

M 6160 TC

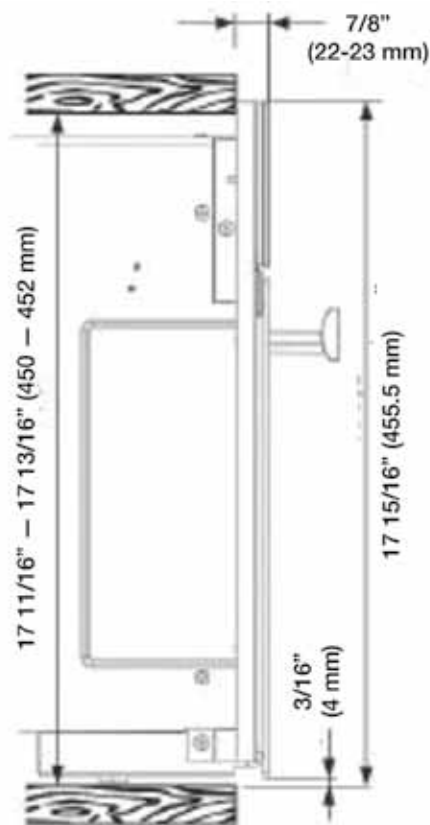


INSTALLATION SPECIFICATIONS

Side flush



Side proud



ContourLine 60cm Microwave Oven M 6160 TC



INSTALLATION SPECIFICATIONS

Install in Tall Cabinet

