

CLOSET-MASTER1 CABINETRY FLOOR PLAN

SCALE: 1/2" = 1' 0"

**Classic Bath Designs, Inc.**

11544 Sheldon St., Sun Valley, CA 91352  
818.767.1144 fax: 818.767.1278



Cust: Dutton for Cui

PO# DWELLING

Scale: As Noted

CLOSET-MASTER1

Approved \_\_\_\_\_

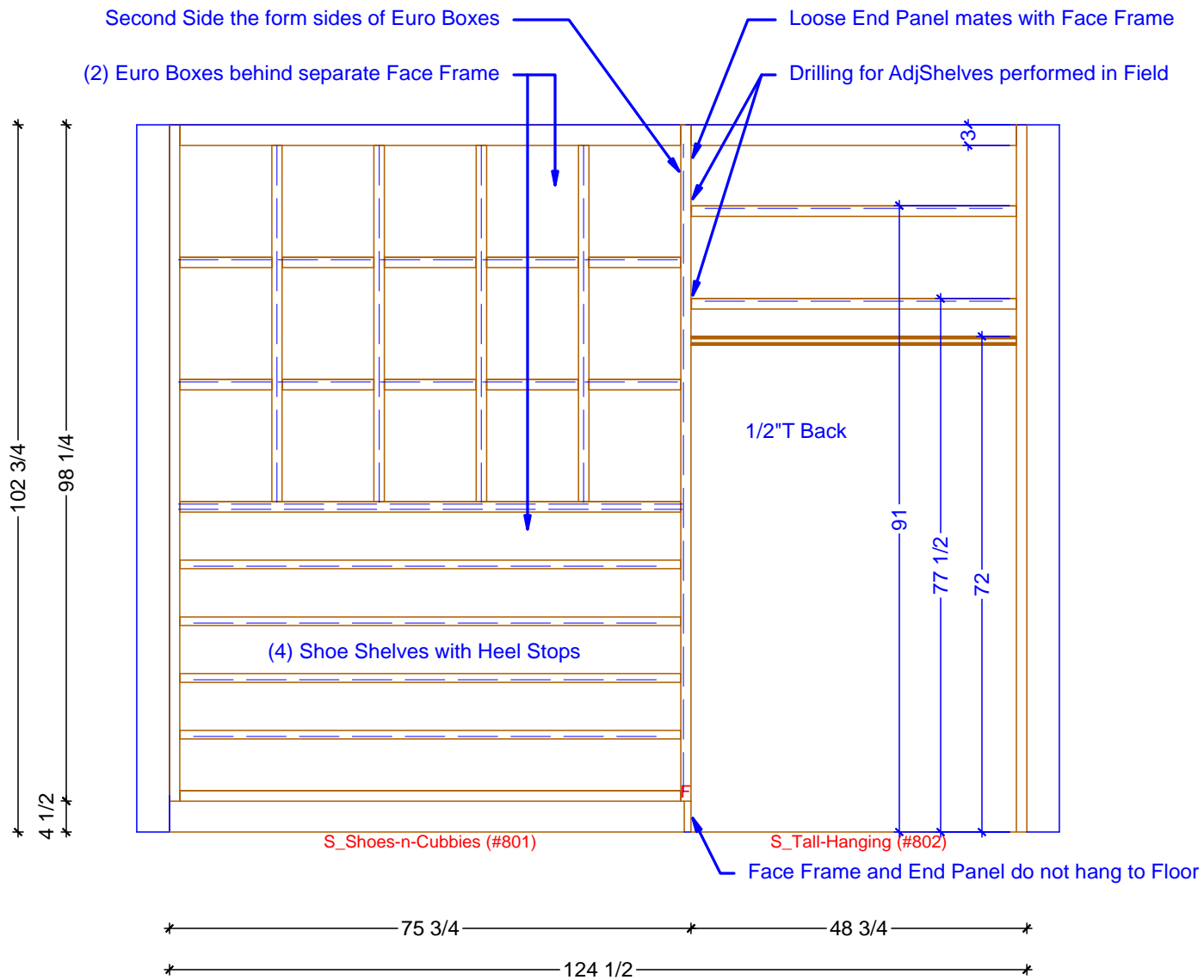
Job: FL-S/FI-S\_PreFIN/PG-UnFin\_IntEB:PreFIN

Size: A

Dr By: Brian

06/12/15

**Cm1.0**



1 CLOSET-MASTER1 ELEVATION - SOUTH  
SCALE: 1/2" = 1' 0"

**Classic Bath Designs, Inc.**  
11544 Sheldon St., Sun Valley, CA 91352  
818.767.1144 fax: 818.767.1278



Cust: Dutton for Cui

PO# DWELLING

Scale: As Noted

CLOSET-MASTER1

Approved \_\_\_\_\_

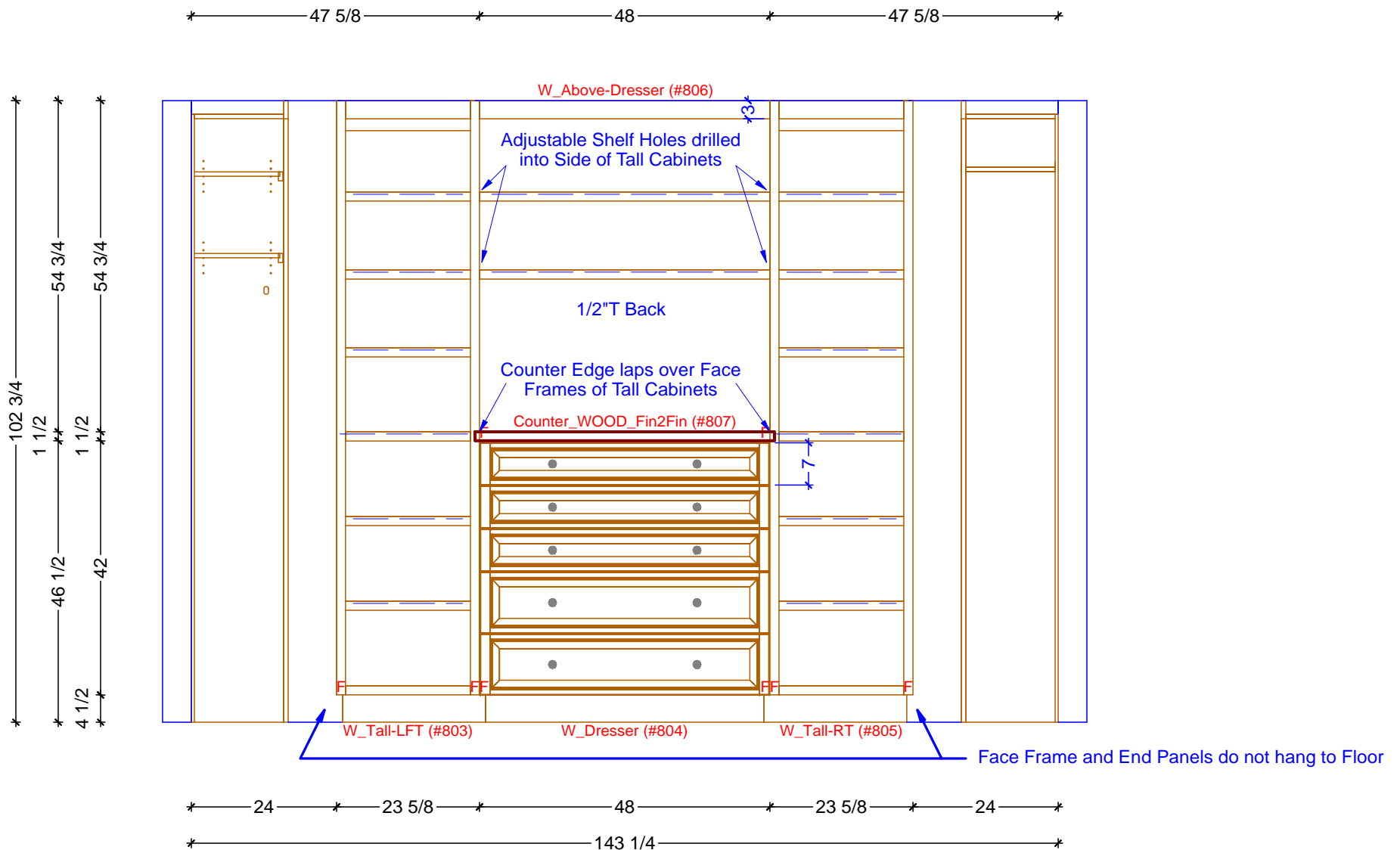
Job: FL-S/FI-S\_PreFIN/PG-UnFin\_IntEB:PreFIN

Size: A

Dr By: Brian

06/12/15

**Cm1.1**



1 CLOSET-MASTER1 ELEVATION - WEST  
SCALE: 1/2" = 1' 0"

**Classic Bath Designs, Inc.**  
11544 Sheldon St., Sun Valley, CA 91352  
818.767.1144 fax: 818.767.1278

Cust: Dutton for Cui

PO# DWELLING

Scale: As Noted

CLOSET-MASTER1

Approved \_\_\_\_\_

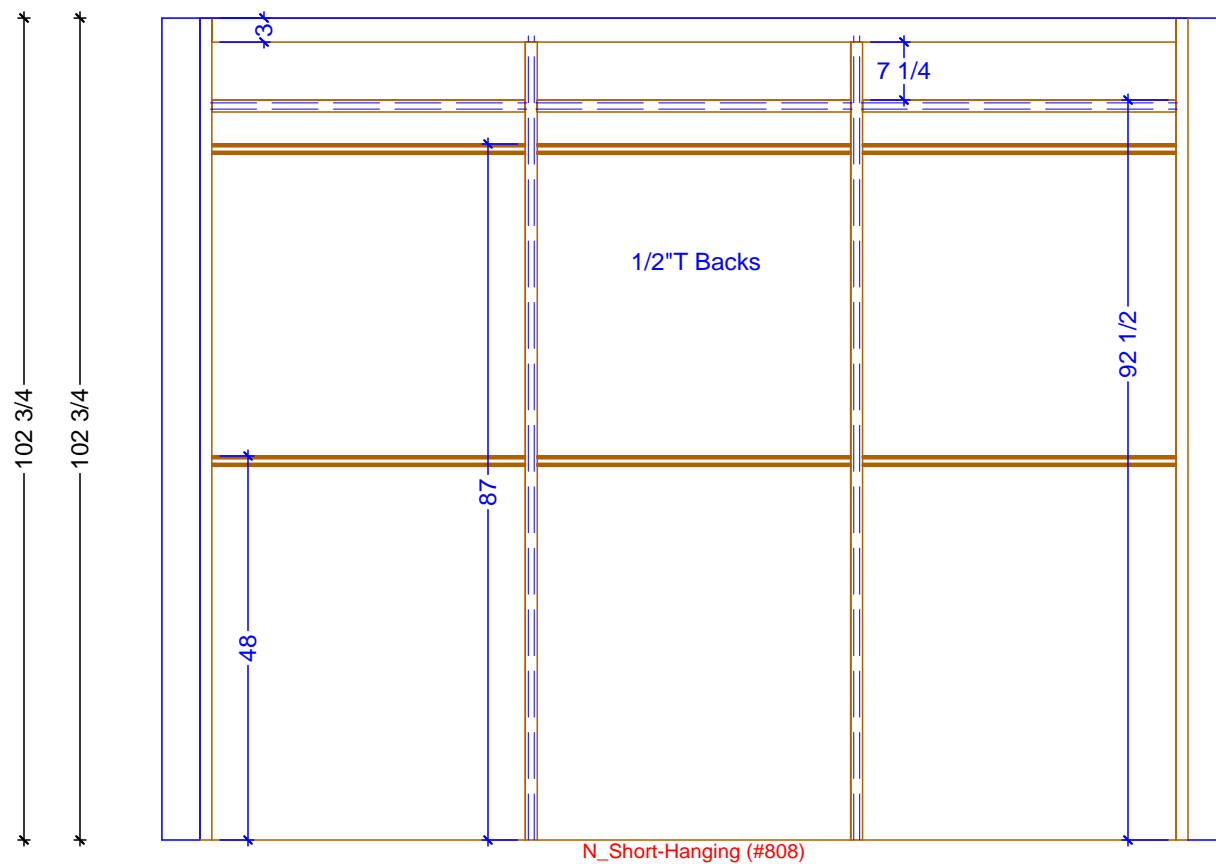
Job: FL-S/Fl-S\_PreFIN/PG-UnFin\_IntEB:PreFIN

Size: A

Dr By: Brian

06/12/15

**Cm1.2**



123 1/2

123 1/2

1 CLOSET-MASTER1 ELEVATION - NORTH

SCALE: 1/2" = 1' 0"

**Classic Bath Designs, Inc.**  
 11544 Sheldon St., Sun Valley, CA 91352  
 818.767.1144 fax: 818.767.1278



Cust: Dutton for Cui

PO# DWELLING

Scale: As Noted

CLOSET-MASTER1

Approved \_\_\_\_\_

Job: FL-S/FI-S\_PreFIN/PG-UnFin\_IntEB:PreFIN

Size: A

Dr By: Brian

06/12/15

**Cm1.3**



**Classic Bath Designs, Inc.**  
 11544 Sheldon St., Sun Valley, CA 91352  
 818.767.1144 fax: 818.767.1278



Cust: Dutton for Cui

PO# DWELLING

Scale: As Noted

CLOSET-MASTER1

Approved \_\_\_\_\_

Job: FL-S/FI-S\_PreFIN/PG-UnFin\_IntEB:PreFIN

Size: A

Dr By: Brian

06/12/15

**Rndr**



**Classic Bath Designs, Inc.**  
 11544 Sheldon St., Sun Valley, CA 91352  
 818.767.1144 fax: 818.767.1278



Cust: Dutton for Cui

PO# DWELLING

Scale: As Noted

CLOSET-MASTER1

Approved \_\_\_\_\_

Job: FL-S/FI-S\_PreFIN/PG-UnFin\_IntEB:PreFIN

Size: A

Dr By: Brian

06/12/15

**Rndr**