

This Data Sheet Includes Information On

Viking

Product Model Number (s):

Wall Hood:
VWH3610

Dimensions (Actual Size)

Width: 35 7/8"

Upper depth: 12"

Lower depth: 21"

Rear height: 10"

Front height: 3"

Duct cutout width: 18"

Duct cutout depth: 3 1/2"

Maximum distance from top of grate support to bottom of hood: 27"

Minimum distance from top of grate support to bottom of hood: 24"

*Transition to 7" round duct is provided with the product.

Additional Information

- **IMPORTANT:** Do NOT obstruct motor cooling vent area.
- Electrical requirements: 120 VAC / 60Hz. 5.6 maximum amps. The electrical knockout(s) are on the top of the unit. This unit is equipped with one blower giving the unit a total of 460 CFM.
- The bottom of the rangehood should be no less than 24" above the burners. It is more desirable for bottom of the hood to be 24" to 27" above the burners.
- Always vent this product outside. DO NOT vent to an attic, wall, garage, room or crawl space.
- Do not restrict ducting anywhere, including roof jacks or wall louvers.

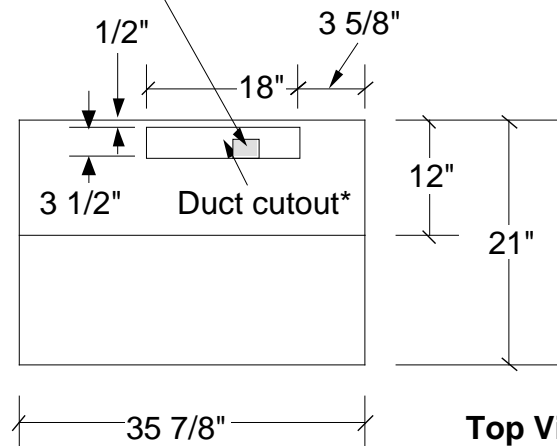
See page 2 for additional information

Subject to change without notice. This system is designed to be updated daily if necessary. Dimension Express is not responsible for use of superseded, voided, or outdated data sheets. Because of the difficulty or impracticability of determining actual damages, liability of Dimension Express shall not exceed \$50.00.

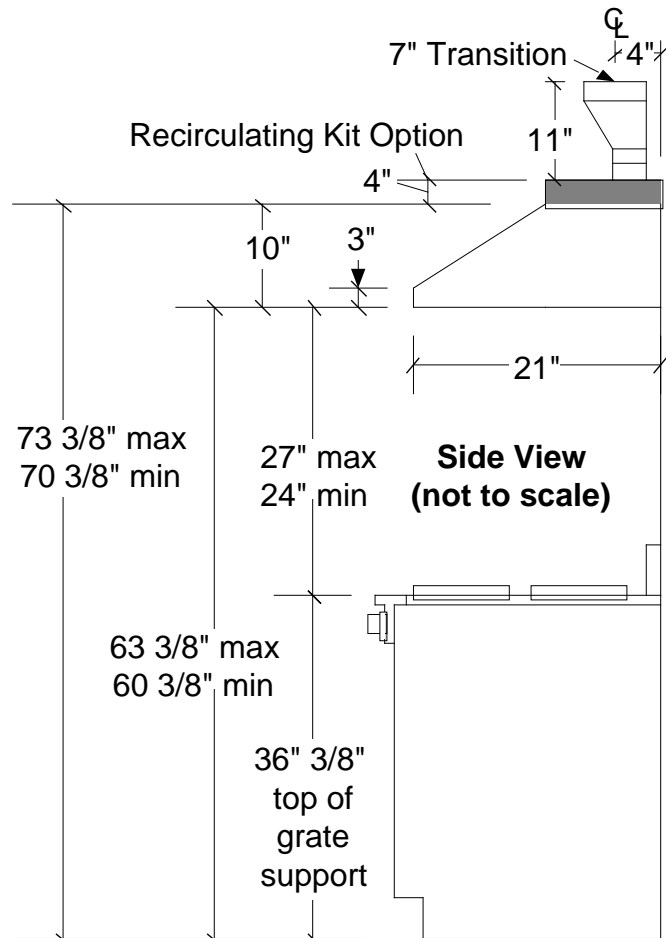
Copyright © Dimension Express, 2007.

231

Electrical Hookup



**Top View
(not to scale)**



**Side View
(not to scale)**

• NEVER reuse Data Sheets. Data Sheets are subject to change without notice. Dimension Express is a FREE service bureau and is updated daily, it makes far more sense to spend the time necessary to request new Data Sheets for each project, as opposed to the problems, time, costs, and risks associated with reusing old Data Sheets.

- Call Dimension Express if you have any questions at (800) 940-2059 •
- Always refer to a current Code at a Glance or manufacturer directory •
- Data Sheet codes change on the first of each quarter at 12:01am •

BN • A231B149 • • 071004 • 17015 • 92658

Additional Information:

- Duct requirements: Unit requires a minimum round duct size of 7" or equivalent, this should never be reduced. Never use flexible duct. Maximum equivalent duct length is 50 feet; for longer duct runs, increase duct size and contact a qualified and trained installer.
- Can be installed with a recirculating kit. The kit installs on the top of the unit and is 4" tall by the width of the unit. Making the overall height of the kit and the hood: 14". Electrical requirements are the same.
- If possible, the vent pipe should be installed in a straight line from the rangehood through the roof, eliminating or reducing the number of elbow joints (elbows reduce the efficiency of the blower). If elbow joints are necessary, they should make gradual turns. Elbows of 90° should be avoided. Each 90° elbow is equivalent to increasing distance by 5-10 feet. Make gradual turns or use 45° elbows. In runs of longer than 20 feet, the duct size can be enlarged by at least 1" after the first 10 feet to improve performance.
- One 7" round transition is shipped standard with hood.

- Units available in Stainless Steel (SS), Black (BK), White (WH), Almond (AL), Biscuit (BT), Stone Gray (SG), Graphite Gray (GG), Burgundy (BU), Lemonade (LE), Mint Julep (MJ), Forest Green (FG), Viking Blue (VB), Cobalt Blue (CB) and Eggplant (EP).
- For brass trim, order the accessory rail option listed below.
- Recirculating kit available in Stainless Steel (SS) only.

Accessories:

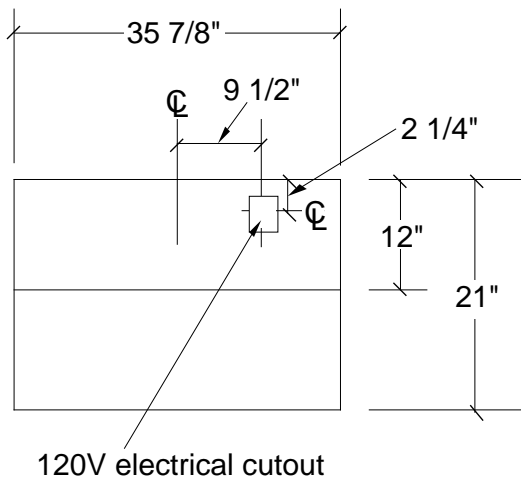
- WGP36 : Wall hood warming shelf panels.
- BKS36 : Wall hood backsplash (30" high).
- DCW36: Hood duct cover. The cover sits on top of the hood and is 12" high X 12" deep X 36" wide.
- VRK36: Recirculating conversion kit (sold separate)
- CF-V13: Replacement charcoal filters (for use with VRK conversion kit)

Options:

- Accessory rail option. For front only; Chrome (CR) or Brass(BR); hooks for racks included; all brass components have a protective coating for maintenance free normal use, must be factory installed.

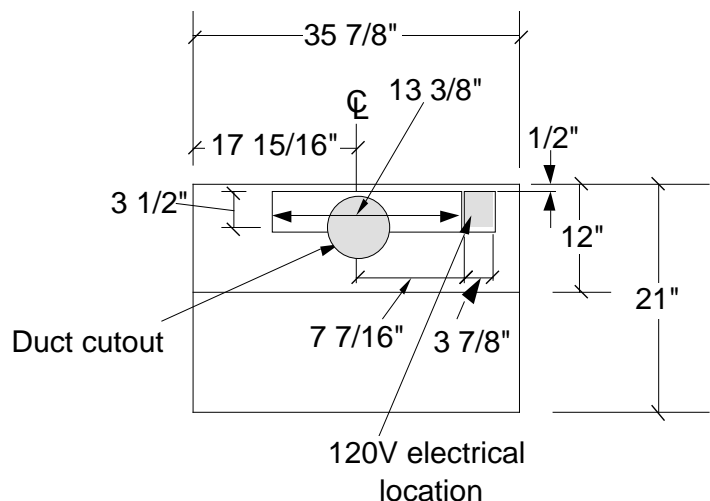
Recirculating Kit Cutouts

Top View
(not to scale)



Ventilator cutouts

Top View
(not to scale)



Subject to change without notice. This system is designed to be updated daily if necessary. Dimension Express is not responsible for use of superseded, voided, or outdated data sheets. Because of the difficulty or impracticability of determining actual damages, liability of Dimension Express shall not exceed \$50.00. Copyright © Dimension Express, 2007.

149

• NEVER reuse Data Sheets. Data Sheets are subject to change without notice. Dimension Express is a FREE service bureau and is updated daily, it makes far more sense to spend the time necessary to request new Data Sheets for each project, as opposed to the problems, time, costs, and risks associated with reusing old Data Sheets.

- Call Dimension Express if you have any questions at (800) 940-2059 •
- Always refer to a current Code at a Glance or manufacturer directory •
- Data Sheet codes change on the first of each quarter at 12:01am •

BN • A231B149 • • 071004 • 17015 • 92658