

KITCHEN FLOOR PLAN
SCALE: 1/2" = 1' 0"

Classic Bath Designs, Inc.
11544 Sheldon St., Sun Valley, CA 91352
818.767.1144 fax: 818.767.1278



Cust: Marina for Albright
Approved _____

PO# DWELLING
Job: FL-S_PreFIN/PG-Maple-MDF_IntEB:PreFIN

Scale: As Noted
Size: L

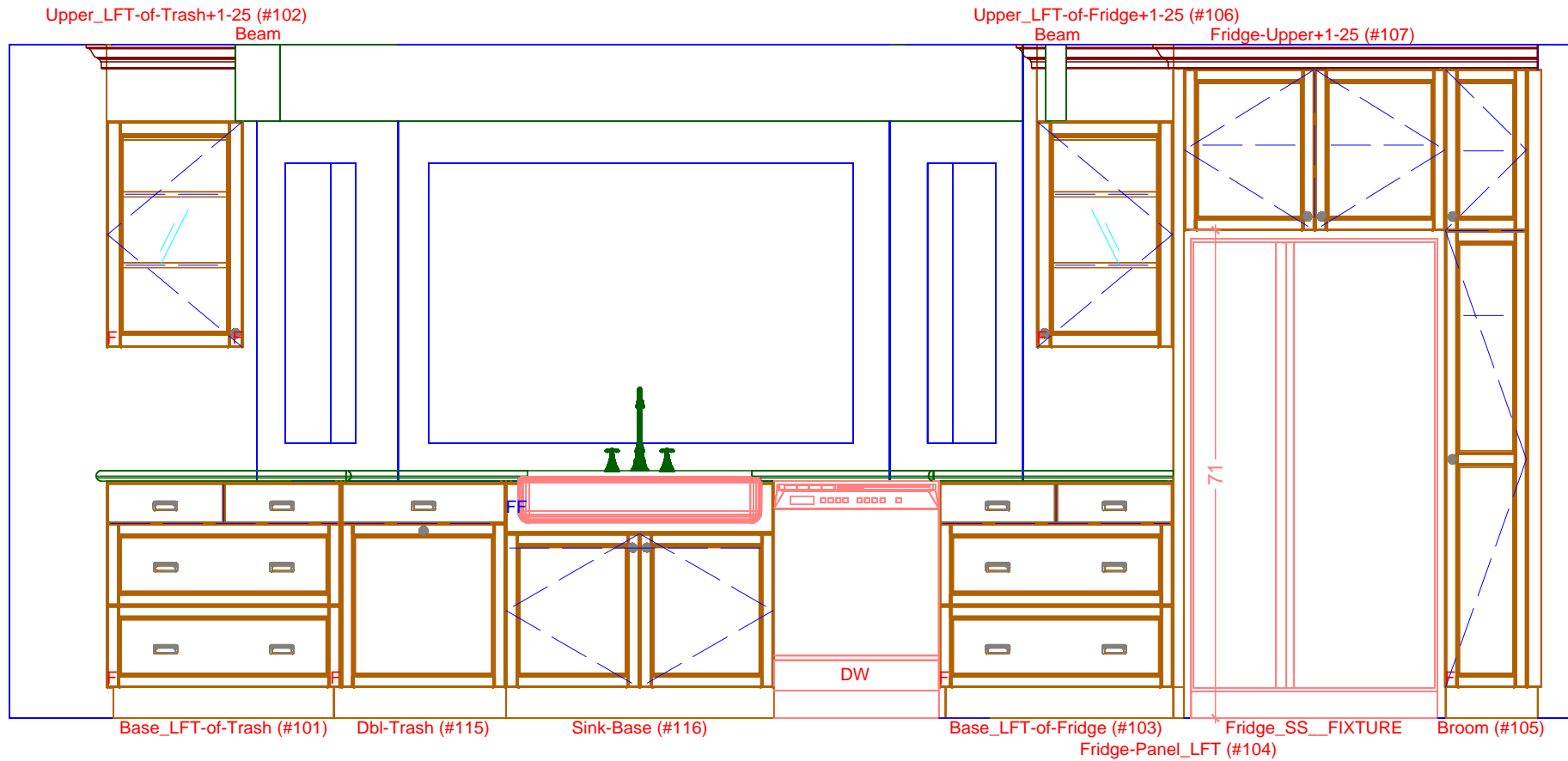
KITCHEN
Dr By: Brian
08/09/2018

K.0

← 14 1/8 ← 19 7/8 ← 2

← 19 7/8 ← 1 1/2 ← 38 ← 13 1/2 ←

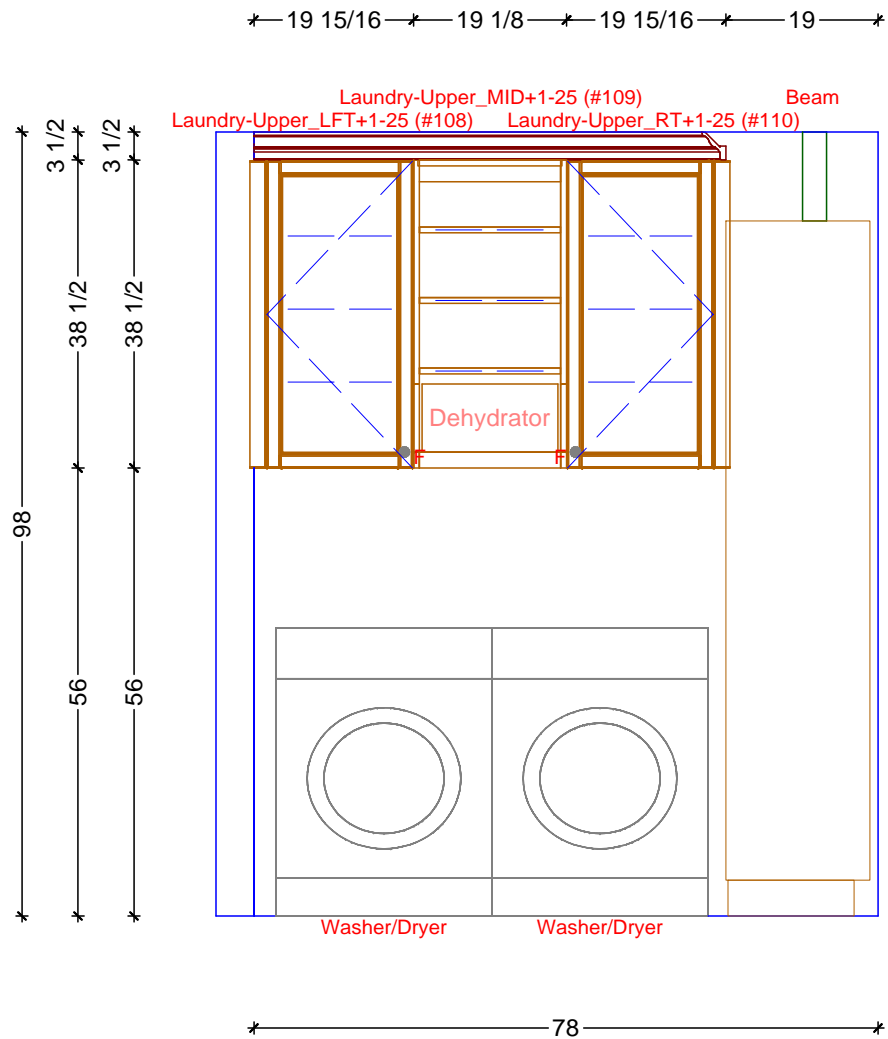
98
 3 1/2
 40 1/2
 32 7/8
 11 1/8
 18
 18
 1 1/2
 36
 30
 4 1/2



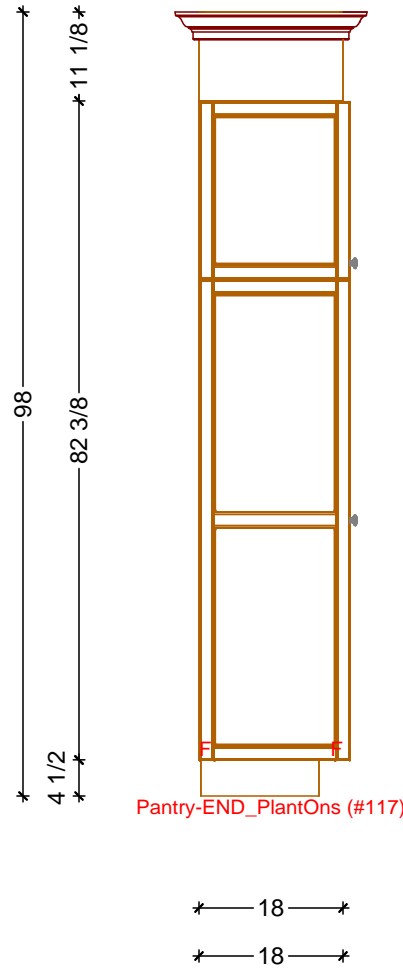
← 14 1/8 ← 34 3/32 ← 24 ← 39 ← 24 ← 34 1/8 ← 1 1/2 ← 38 ← 13 1/2 ←
 ← 48 7/32 ← 86 31/32 ← 87 1/8 ←

1 KITCHEN ELEVATION - SOUTH
 SCALE: 1/2" = 1' 0"

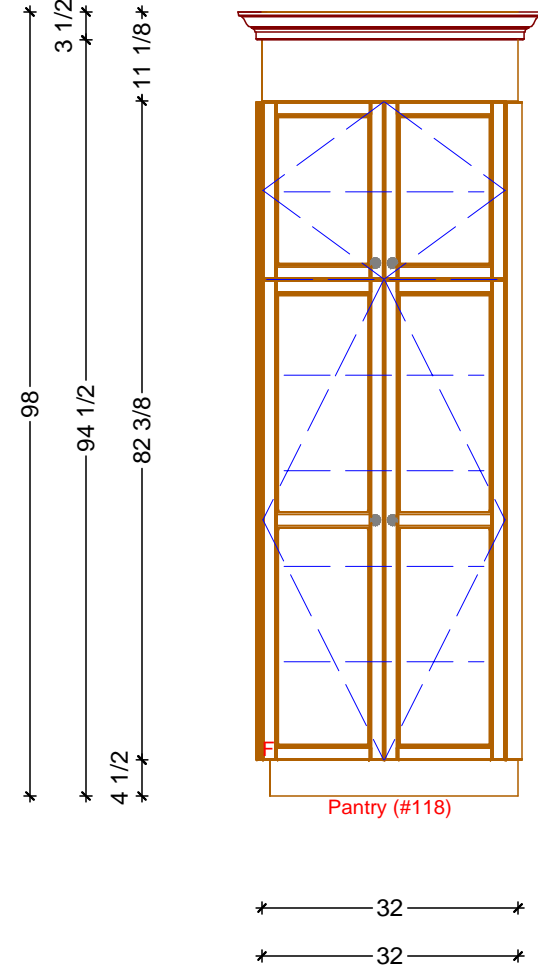




1 LAUNDRY ELEVATION
SCALE: 1/2" = 1' 0"

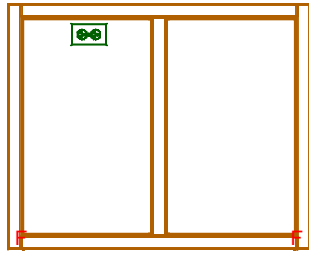


2 PANTRY ELEVATION
SCALE: 1/2" = 1' 0"



3 PANTRY ELEVATION
SCALE: 1/2" = 1' 0"

36
3 9/16
1 1/2
30 15/16



Isle-END_PlantOn (#113)

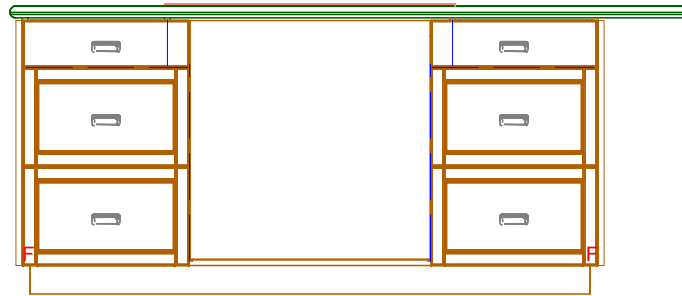
36
36

1

ISLE ELEVATION - END

SCALE: 1/2" = 1' 0"

36
3 9/16
1 1/2
30 15/16



Isle-FRNT (#111)

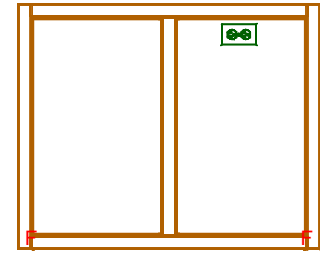
72
72

2

ISLE ELEVATION - FRONT

SCALE: 1/2" = 1' 0"

36
3 9/16
1 1/2
30 15/16



Isle-END_PlantOn (#114)

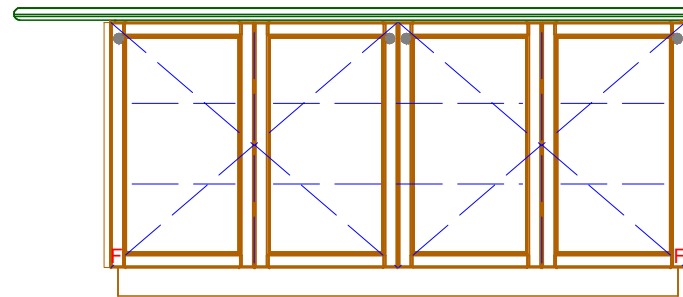
36
36

3

ISLE ELEVATION - END

SCALE: 1/2" = 1' 0"

36
3 9/16
1 1/2
30 15/16



Isle-BACK (#112)

72
72

4

ISLE ELEVATION - BACK

SCALE: 1/2" = 1' 0"





Classic Bath Designs, Inc.
 11544 Sheldon St., Sun Valley, CA 91352
 818.767.1144 fax: 818.767.1278



Cust: Marina for Albright

Approved _____

PO# DWELLING

Job: FL-S_PreFIN/PG-Maple-MDF_IntEB:PreFIN

Scale: As Noted

Size: L

KITCHEN

Dr By: Brian

08/09/2018

Rndr



Classic Bath Designs, Inc.
 11544 Sheldon St., Sun Valley, CA 91352
 818.767.1144 fax: 818.767.1278



Cust: Marina for Albright

Approved _____

PO# DWELLING

Job: FL-S_PreFIN/PG-Maple-MDF_IntEB:PreFIN

Scale: As Noted

Size: L

KITCHEN

Dr By: Brian

08/09/2018

Rndr



Classic Bath Designs, Inc.
 11544 Sheldon St., Sun Valley, CA 91352
 818.767.1144 fax: 818.767.1278



Cust: Marina for Albright

PO# DWELLING

Scale: As Noted

KITCHEN

Approved _____

Job: FL-S_PreFIN/PG-Maple-MDF_IntEB:PreFIN

Size: L

Dr By: Brian

08/09/2018

Rndr