

BUILT-IN MICROWAVES PLANNING INFORMATION

MODEL OPTIONS

There are two Thermador Built-in Microwaves to choose from — traditional and convection. 27-inch and 30-inch stainless steel trim kits are available for each. You can also choose a Thermador Built-in MicroDrawer™. This product is available Q2 2012. Log on to thermador.com or visit your local dealer for planning information.

INSTALLATION CONSIDERATIONS (MBES/MCES MODELS)

The information in this design guide provides key features, product dimensions, cutouts and installation specifications. Before installing a Thermador Microwave oven, be sure to verify the cabinet dimensions and electrical connections. Also, always consult the installation manual packed with the product for complete details before installing.

It is the responsibility of the owner and the installer to determine if additional requirements and/or standards apply to specific installations.

MBES/MCES models must be used in conjunction with a 27-inch or 30-inch microwave trim kit.

The microwave oven can be installed into a cabinet or wall by itself, or above any Thermador Built-in Oven.

To reduce the risk of fire and electric shock, install microwave at least $\frac{3}{4}$ " above designated oven.

Do not block air vents. If they are blocked during operation, the oven may be overheated and damaged. If the oven overheats, a thermal safety device will turn the oven off. The oven will remain inoperable until it has cooled.

Do not place the microwave near a hot, damp surface such as a gas or electric range, dishwasher, or in an excessively humid room.

WARRANTY



Limited warranty parts and labor (2 year).

See page 308 for additional warranty details.



Microwaves are UL approved.

ELECTRICAL SPECIFICATIONS

The microwave oven must be on a separate circuit. No other appliance should share the circuit with the microwave oven. If it does, the branch circuit fuse may blow or the circuit breaker may trip, or the food may cook slower than recommended.

This appliance must be grounded. It is equipped with a cord having a grounding wire with a grounding plug. The plug must be plugged into at least a 20 Amp, 120 Volt, 60 Hz 3-wire, grounded outlet that is properly installed.

The voltage used must be the same as specified on this microwave oven (120V, 60Hz). Using a higher voltage is dangerous and may result in a fire or oven damage. Using a lower voltage will cause slow cooking.

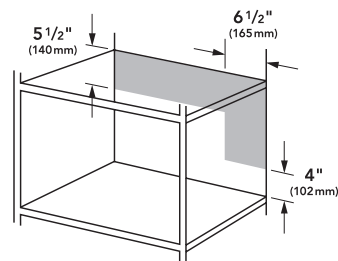
Do not use an extension cord. If the power supply cord is too short, have a qualified electrician or serviceman install an outlet near the appliance.

MODEL	REQUIRED CIRCUIT BREAKER
	240V, 60 Hz
MBES	20 Amp
MCES	20 Amp
MD24JS	15 Amp

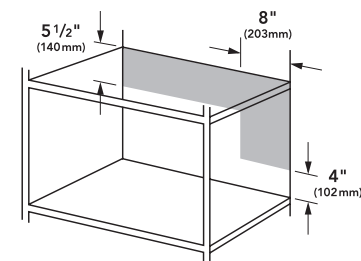
ELECTRICAL LOCATION (MBES/MCES MODELS)

The outlet must be properly grounded in accordance with all applicable codes. It can be installed in the back wall directly behind the oven. The outlet should be located anywhere within the shaded area.

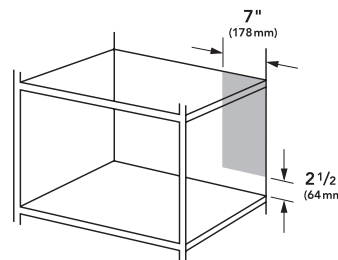
27-Inch Traditional



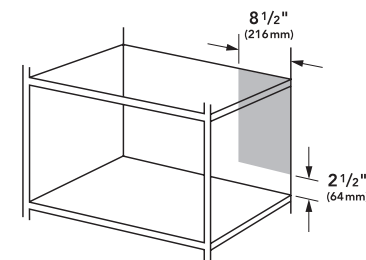
30-Inch Traditional



27-Inch Convection



30-Inch Convection



BUILT-IN MICROWAVES

24-INCH MICRODRAWER™ MICROWAVE

MD24JS



MD24JS

Product available May 2012. For our current collection of Microwaves, refer to Volume 1 of the Kitchen Design and Planning Guide or visit thermador.com or your local dealer for details.

MD24JS

PERFORMANCE

- Spacious 1.2 cu. ft. cavity fits a 20 oz. cup
- Microwave interior accommodates a 13" x 9" pan
- 950 Watts Microwave power
- 10 Cooking Modes (incl. Melt, Soften, Keep Warm)
- Sensor Cooking programs measure humidity and adjust cooking level and cooking time
- Touch "open" and "close"

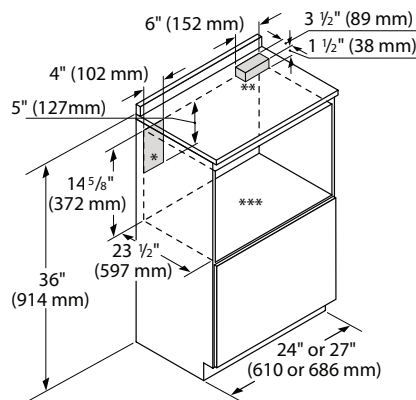
DESIGN

- Perfect Flush installation
- Hidden Vent
- Premium glass touch control
- Blue digital display with scrolling text

SPECIFICATIONS

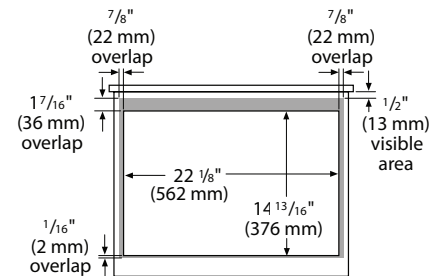
Overall Microwave Width	23 7/8"
Overall Microwave Height	16 5/16"
Overall Microwave Depth	23 3/8"
Standard Installation:	
Cutout Width	22 1/8"
Cutout Height	14 13/16"
Cutout Depth	23 1/2"
Minimum Overlap – Sides	7/8"
Minimum Overlap – Top	3/16"
Minimum Overlap – Bottom	7/16"
Cabinet Base Support Requirements (lbs.)	100
Installation Below an Oven	Yes – Clearance of at least 2"
Flush Installation:	
Cutout Width	24 1/2"
Cutout Height	16 15/16"
Cutout Depth	23 1/2"
Minimum Overlap – Sides	N/A
Minimum Overlap – Top	N/A
Minimum Overlap – Bottom	N/A
Cabinet Base Support Requirements (lbs.)	100
Installation Below an Oven	Yes
Max. Microwave Power	950 Watts
Electrical Supply	120V, 60Hz
Required Circuit Breaker	15 Amp
Power Cord Length	48", 3-Wire
Power Cord Included	Yes
Interior Dimensions (W x H x D)	17 5/16" x 7 1/8" x 16 9/16"
Shipping Weight (lbs.)	90

STANDARD INSTALLATION

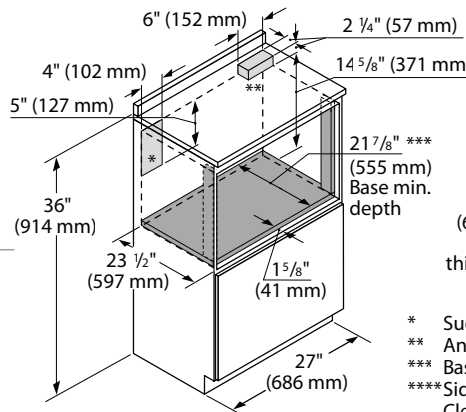


- * Suggested location of electrical outlet
- ** Anti-Tip Block
- *** Base should support up to 100 lbs

Frontview cut out

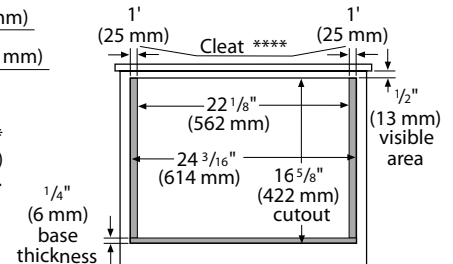


FLUSH INSTALLATION



- * Suggested location of electrical outlet
- ** Anti-Tip Block
- *** Base should support up to 100 lbs
- **** Sides should be finished and extend back to cleat. Cleats should also be finished, as they may be visible after installation. (Cleats are not included with unit.)

Frontview cut out



BUILT-IN MICROWAVES

24-INCH MICRODRAWER™ MICROWAVE

MD24JS



MODELS SHOWN: PRD366JGU PRO GRAND® RANGE, PH36GS HOOD AND MD24JS MICRODRAWER™ MICROWAVE